

Asymmetric

Asymmetric Sofas

2014

Sofas



Designer Craig Bassam conceived the BassamFellows Asymmetric Sofa when he began looking for a stylish, scalable sofa that would be suitable for his personal study. He wanted a piece that would harmonize two competing needs – a sofa that would work during collaborative meetings whilst being appropriate for personal contemplation. Asymmetric is the quintessential landscape sofa group, which achieves asymmetrical or informal balance using closed and open elements that appear divergent, but carry equal visual weight. The group consists of three different lengths of sofa units, a corner unit, a chaise, and an ottoman. The planning module allows for a multitude of layout arrangements from a typical sofa format to landscape configurations where armed, armless, and backless elements can be combined to vary the horizon line of the piece and open it up to the room. Regardless of its configuration, the Asymmetric offers a supremely comfortable sit.

CB-696R Righthand CB-696L Lefthand Asymmetric Large Sofa

W 97 1/4", 247 cm
D 32", 81.2 cm
H 28 1/2", 72.4 cm
SH 16", 40.5 cm
AH 22 1/2", 57.2 cm

CB-696 Armless Asymmetric Large Sofa

W 96", 244 cm
D 32", 81.2 cm
H 28 1/2", 72.4 cm
SH 16", 40.5 cm

CB-696A With Arms Asymmetric Large Sofa

W 98 1/2", 250.2 cm
D 32", 81.2 cm
H 28 1/2", 72.4 cm
SH 16", 40.5 cm
AH 22 1/2", 57.2 cm

CB-696CR Righthand Corner CB-696CL Lefthand Corner Asymmetric Large Sofa

W 97 1/4", 247 cm
D 32", 81.2 cm
H 28 1/2", 72.4 cm
SH 16", 40.5 cm
AH 22 1/2", 57.2 cm

Wood:
Solid Ash
Solid Oak
Solid Walnut

Finish:
Ebonized black lacquer on Ash or bleached, white pigment, matte acrylic on Ash. Raw effect lacquer on Oak. Natural lacquer on Oak or Walnut.

Upholstery:
Multilayered plywood inner frame; seat support with a combination of foam and memory foam; arm, back and seat cushions in fiber, feather, and down.

Made in USA

Asymmetric

Asymmetric Sofas

2014

Sofas



Designer Craig Bassam conceived the BassamFellows Asymmetric Sofa when he began looking for a stylish, scalable sofa that would be suitable for his personal study. He wanted a piece that would harmonize two competing needs – a sofa that would work during collaborative meetings whilst being appropriate for personal contemplation. Asymmetric is the quintessential landscape sofa group, which achieves asymmetrical or informal balance using closed and open elements that appear divergent, but carry equal visual weight. The group consists of three different lengths of sofa units, a corner unit, a chaise, and an ottoman. The planning module allows for a multitude of layout arrangements from a typical sofa format to landscape configurations where armed, armless, and backless elements can be combined to vary the horizon line of the piece and open it up to the room. Regardless of its configuration, the Asymmetric offers a supremely comfortable sit.

**CB-680R Righthand
CB-680L Lefthand
Asymmetric Medium Sofa**

W 81 1/4", 206.4 cm
D 32", 81.2 cm
H 28 1/2", 72.4 cm
SH 16", 40.5 cm
AH 22 1/2", 57.2 cm

**CB-680 Armless
Asymmetric Medium Sofa**

W 80", 203.2 cm
D 32", 81.2 cm
H 28 1/2", 72.4 cm
SH 16", 40.5 cm

**CB-680A With Arms
Asymmetric Medium Sofa**

W 82 1/2", 209.5 cm
D 32", 81.2 cm
H 28 1/2", 72.4 cm
SH 16", 40.5 cm
AH 22 1/2", 57.2 cm

**CB-680CR Righthand Corner
CB-680CL Lefthand Corner
Asymmetric Medium Sofa**

W 80", 203.2 cm
D 32", 81.2 cm
H 28 1/2", 72.4 cm
SH 16", 40.5 cm

Wood:
Solid Ash
Solid Oak
Solid Walnut

Finish:
Ebonized black lacquer on Ash or bleached, white pigment, matte acrylic on Ash. Raw effect lacquer on Oak. Natural lacquer on Oak or Walnut.

Upholstery:
Multilayered plywood inner frame; seat support with a combination of foam and memory foam; arm, back and seat cushions in fiber, feather, and down.

Made in USA

Asymmetric

Asymmetric Sofas

2014

Sofas



Designer Craig Bassam conceived the BassamFellows Asymmetric Sofa when he began looking for a stylish, scalable sofa that would be suitable for his personal study. He wanted a piece that would harmonize two competing needs – a sofa that would work during collaborative meetings whilst being appropriate for personal contemplation. Asymmetric is the quintessential landscape sofa group, which achieves asymmetrical or informal balance using closed and open elements that appear divergent, but carry equal visual weight. The group consists of three different lengths of sofa units, a corner unit, a chaise, and an ottoman. The planning module allows for a multitude of layout arrangements from a typical sofa format to landscape configurations where armed, armless, and backless elements can be combined to vary the horizon line of the piece and open it up to the room. Regardless of its configuration, the Asymmetric offers a supremely comfortable sit.

CB-664R Righthand CB-664L Lefthand Asymmetric Small Sofa

W 65 1/4", 165.7 cm
D 32", 81.2 cm
H 28 1/2", 72.4 cm
SH 16", 40.5 cm
AH 22 1/2", 57.2 cm

CB-664 Armless Asymmetric Small Sofa

W 64", 162.6 cm
D 32", 81.2 cm
H 28 1/2", 72.4 cm
SH 16", 40.5 cm

CB-664CHR Righthand CB-664CHL Lefthand Asymmetric Chaise

W 64", 162.6 cm
D 33 1/4", 84.5 cm
H 28 1/2", 72.4 cm
SH 16", 40.5 cm
AH 22 1/2", 57.2 cm

CB-632F Asymmetric Ottoman

D 32", 81.2 cm
D 32", 81.2 cm
H 16", 40.5 cm
SH 16", 40.5 cm

Wood:
Solid Ash
Solid Oak
Solid Walnut

Finish:
Ebonized black lacquer on Ash or bleached, white pigment, matte acrylic on Ash. Raw effect lacquer on Oak. Natural lacquer on Oak or Walnut.

Upholstery:
Multilayered plywood inner frame; seat support with a combination of foam and memory foam; arm, back and seat cushions in fiber, feather, and down.

Made in USA

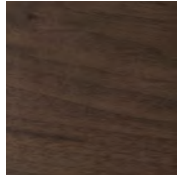
Wood

BassamFellows
Wood

Wood



Walnut
W-NA



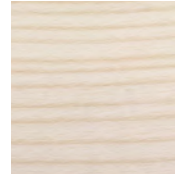
Walnut Black Oil
W-BO



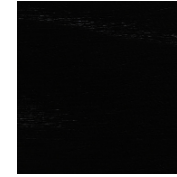
Oak
O-NA



Oak Raw Effect
O-RE



White Ash
A-BL



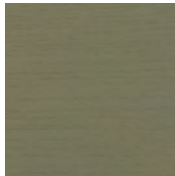
Ebonized Ash
A-EB



Teak
T-NA



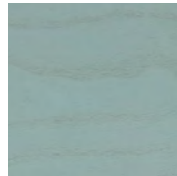
Iroko
I-NA



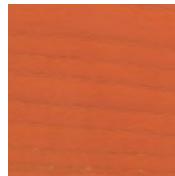
Sage Green Ash
A-SG



Sun Yellow Ash
A-SY



Horizon Blue Ash
A-HB



Mesa Red Ash
A-MR

Elegant

BassamFellows
Leather

Leather



95947 Oxblood



11038 Platinum
Gray



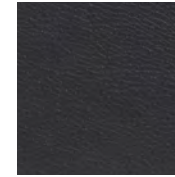
43024 Camel



43807 British Tan



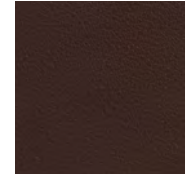
48027 Olive



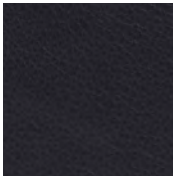
91059 Anthracite



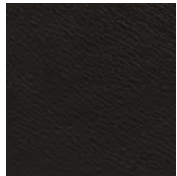
93718 Dark Cognac



93957 Dark Brown



97026 Dark Navy



99001 Black

Elegant grain leather is aniline-dyed with a batique-effect that displays the natural character of the original Scandinavian cattle hide.

Additional colors available. Minimum and upcharge may apply.

Raw Material

Grain leather from
Scandinavian cattle

Thickness

1.0 – 1.2mm

Finish

Pure aniline leather

Lightfastness

3

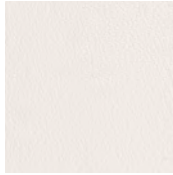
Price Grade

A

Coach

Leather

BassamFellows
Leather



00118 Milk



11073 Pale Gray



11049 Medium Gray



13048 Elephant



01061 Gray Beige



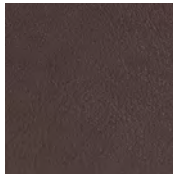
13072 Taupe



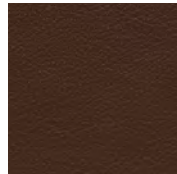
02119 Camel



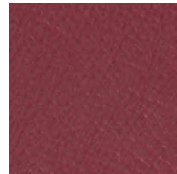
33004 British Tan



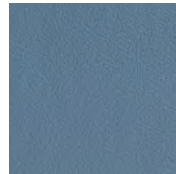
93129 Dark
Chocolate



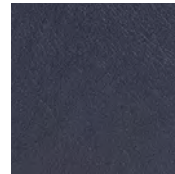
93109 Topaz Brown



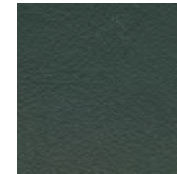
35126 Oxblood



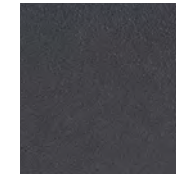
17027 Cadet Blue



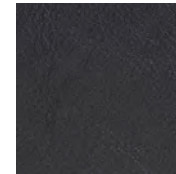
77127 Dark Navy



98015 Dark Green



91102 Anthracite



99999 Black

Coach is a chrome free, soft and pliable semi-aniline leather that offers outstanding comfort combined with excellent durability and is suitable for public environments.

Additional colors available. Minimum and upcharge may apply.

Raw Material

Grain leather from Scandinavian cattle

Thickness

1.1 - 1.3mm

Finish

Semi-Aniline leather

Lightfastness

6

Price Grade

A

Comfort

BassamFellows
Leather

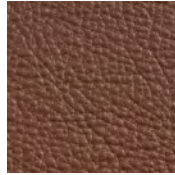
Leather



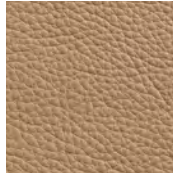
02067 Beige



12114 Gray Beige



33286 Chestnut
Brown



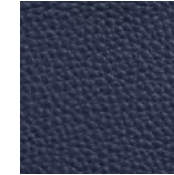
43632 Camel



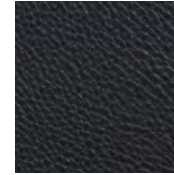
91089 Anthracite



93287 Chocolate



97054 Navy



99991 Black

Like the name suggests, Comfort is a soft aniline leather that showcases a varied grain and the distinct features of the natural hide.

Additional colors available. Minimum and upcharge may apply.

Raw Material

Grain leather from
Scandinavian cattle

Thickness

1.3 - 1.5mm

Finish

Pure aniline leather

Lightfastness

3

Price Grade

B

Kalista

BassamFellows
for Geiger Textiles

Textiles



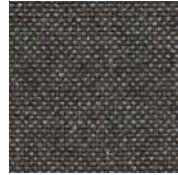
1AL02 Natural



1AL03 Titanium



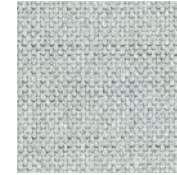
1AL04 Pewter



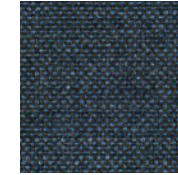
1AL05 Starry Night



1AL08 Dune



1AL10 Bluestone



1AL12 Night Sky

Woven using recycled cotton from the apparel industry, Kalista is a plain weave using space-dyed yarns to create a slightly varied, striated appearance in this classic fabric.

Additional colors available. Minimum and upcharge may apply.

Content

71% Post-Industrial Recycled Cotton,
18% Post-Industrial Recycled Polyester,
11% Polyester

Width

54"

Finish

PFOA-Free
Stain Resistant

Abrasion

90,000 Double Rubs,
Wyzenbeek

Flammability

CA TB 117-2013

Price Grade

1



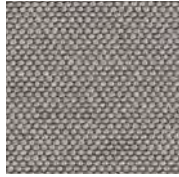
Saille

BassamFellows
for Geiger Textiles

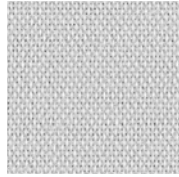
Textiles



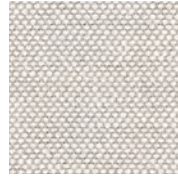
18001 Coal



18002 Shale



18003 Haze



18004 Stone



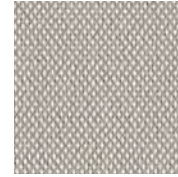
18005 White



18006 Beach



18007 Sand



18010 Fog



18013 Summer Sky



18014 Lake



18015 Midnight Blue

A versatile foundational textile, Saille is a uniform plain weave using two yarn colors to create the effect of a classic canvas sailcloth.

Additional colors available. Minimum and upcharge may apply.

Content

69% Cotton,
31% Polyester

Width

57"

Finish

PFOA-Free
Stain Resistant

Backing

Acrylic

Abrasion

75,000 Double Rubs,
Wyzenbeek

Flammability

CA TB 117-2013

Price Grade

1



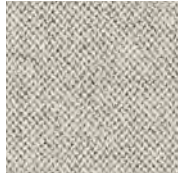
Bellano

BassamFellows
for Geiger Textiles

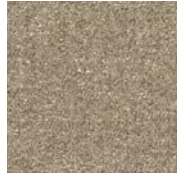
Textiles



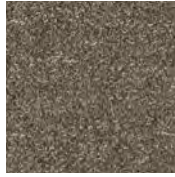
1AX01 Pearl



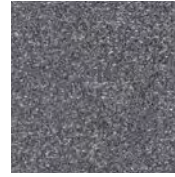
1AX02 Fog



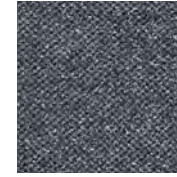
1AX03 Fawn



1AX04 Pumice



1AX05 Pewter



1AX06 Atlantic



1AX10 Charcoal



1AX11 Umber

A blending of natural fibers—wool, linen and alpaca—gives Bellano a slight sheen and luxurious texture.

Additional colors available. Minimum and upcharge may apply.

Content

75% Wool, 10% Linen,
8% Nylon, 7% Alpaca

Width

55"

Abrasion

40,000 Cycles,
Martindale

Flammability

CA TB 117-2013

Price Grade

3



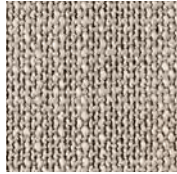
Capri

BassamFellows
for Geiger Textiles

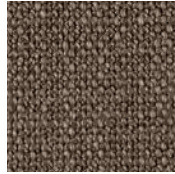
Textiles



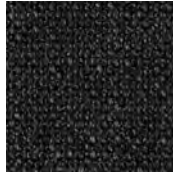
17201 Snow



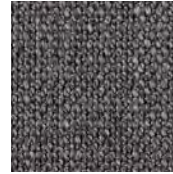
17202 Stone



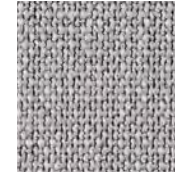
17203 Trench



17204 Graphite



17205 Anthracite



17206 Light Silver

A soft, highly textural fabric, Capri is woven using a combination of irregular heavy yarns and refined, tightly spun cotton yarns, giving it a multidimensional appearance appropriate in any climate.

Additional colors available. Minimum and upcharge may apply.

Content

36% Cotton, 32% Acrylic,
24% Rayon, 8% Polyester

Width

55"

Finish

PFOA-Free
Stain Resistant

Backing

Acrylic

Abrasion

80,000 Cycles,
Martindale

Flammability

CA TB 117-2013

Price Grade

3



Milaner

BassamFellows
for Geiger Textiles

Textiles



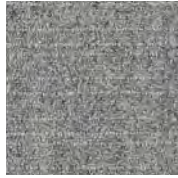
17103 Bark



17104 Deep Navy



17105 Charcoal



17106 Medium Gray



17107 Ash



17108 Crimson

Reminiscent of fine suiting fabric, Milaner uses a mixture of yarns and a mélange of fibers to create a heathered texture with a subtle check.

Additional colors available. Minimum and upcharge may apply.

Content

56% Wool, 10% Acrylic,
10% Alpaca, 10% Cotton,
8% Nylon, 6% Rayon

Width

55"

Abrasion

70,000 Cycles,
Martindale

Flammability

CA TB 117-2013

Price Grade

3



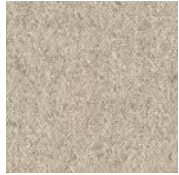
Panno di Dolce

Textiles

BassamFellows
for Geiger Textiles



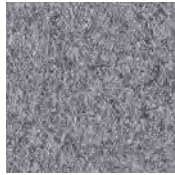
1AV01 Fog



1AV02 Dune



1AV03 Trench



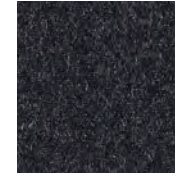
1AV04 Flannel



1AV05 Charcoal



1AV06 Umber



1AV07 Deep Navy



1AV08 Graphite

A classic textile, Panno di Dolce mixes a combination of yarns to achieve a refined heathered wool flannel appearance.

Additional colors available. Minimum and upcharge may apply.

Content

65% Wool, 20% Nylon,
15% Alpaca

Width

55"

Abrasion

75,000 Cycles,
Martindale

Flammability

CA TB 117-2013

Price Grade

3



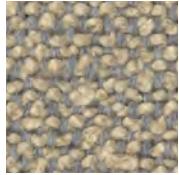
Pristina

BassamFellows
for Geiger Textiles

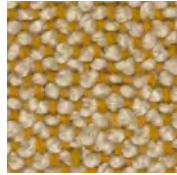
Textiles



1JC01 Dove



1JC02 Goldstone



1JC03 Daybreak



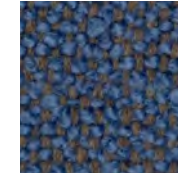
1JC04 Pumice



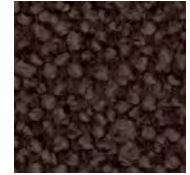
1JC05 Cappuccino



1JC06 Gunmetal



1JC07 Caspian



1JC08 Café Noir

Pristina is a two-toned classic wool bouclé that takes inspiration from the highly tactile upholstery made famous in mid-century design.

Content

37% Wool, 25% Viscose,
17% Acrylic, 15% Cotton,
6% Polyester

Width

54"

Finish

PFOA-Free Stain Resistant

Abrasion

85,000 Double Rubs,
Wyzenbeek

Flammability

CA TB 117-2013

Price Grade

3



Resca

BassamFellows
for Geiger Textiles

Textiles



1AW01 Fog



1AW02 Dune



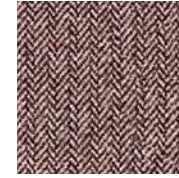
1AW03 Trench



1AW04 Flannel



1AW05 Umber



1AW06 Bordeaux

A subtle nod to menswear, Resca uses light and dark woolen yarns to create an updated small-scale asymmetrical herringbone.

Content

75% Wool, 10% Linen,
8% Nylon, 7% Alpaca

Width

56"

Abrasion

40,000 Cycles,
Martindale

Flammability

CA TB 117-2013

Price Grade

3



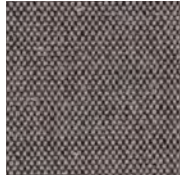
Wool Tweed

Textiles

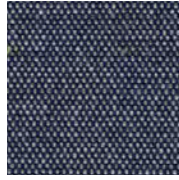
BassamFellows
for Geiger Textiles



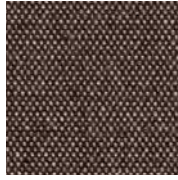
16601 Trench



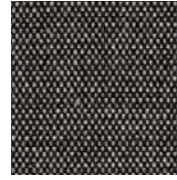
16602 Pewter



16605 Navy



16606 Umber



16607 Charcoal

Made in New Zealand from ultra-soft, locally sourced wool, this multicolored woolen fabric is reminiscent of Donegal tweed, characterized by bright flecks of color randomly woven throughout.

Additional colors available. Minimum and upcharge may apply.

Content

80% Wool,
20% Nylon

Width

54"

Abrasion

70,000 Cycles,
Martindale

Flammability

CA TB 117-2013

Price Grade

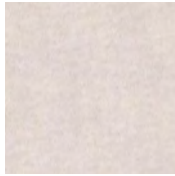
3



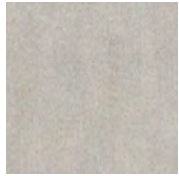
Allusion

BassamFellows
for Geiger Textiles

Textiles



1GS01 Moonlight



1GS02 Pearl Gray



1GS03 Platinum



1GS04 Smoky
Taupe



1GS05 Camel



1GS07 Chestnut
Brown



1GS11 Sterling



1GS12 Anthracite

An opulent alpaca velvet, Allusion has subtle shade variation in the dense, non-directional pile, featuring a special finish for exceptional wearability.

Additional colors available. Minimum and upcharge may apply.

Content

60% Alpaca, 27% Wool,
13% Nylon

Width

56"

Backing

Cotton

Abrasion

95,000 Cycles,
Martindale

Flammability

CA TB 117-2013

Price Grade

5



Staple

BassamFellows
for Geiger Textiles

Textiles



16101 Light
Native Umber



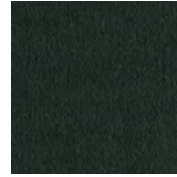
16103 Pearl Gray



16104 Light Gray



16105 Ferric Gray



16106 Black Green



16107 Prussian Blue



16108 Navy



16110 Chestnut
Brown



16111 Ruby Red

Staple is classic wool velvet, with a dense, non-directional pile, giving it a matte appearance and high durability.

Additional colors available. Minimum and upcharge may apply.

Content

100% Wool

Width

54"

Backing

Cotton

Abrasion

250,000 Cycles,
Martindale

Flammability

CA TB 117-2013

Price Grade

5

