

# Petal

## Petal Chair

2018

Chairs



The BassamFellows Petal Chair is the most advanced 3D molded wood veneer chair ever put into commercial production. It takes some of its inspiration from Saarinen's Tulip chair, and also offers a dialogue with the history of the Charles and Ray Eames experiments. The super-shaped wood mimics the unfolding of flower petals, creating a comfortable ergonomic form. The back is wider at its top to provide support, while rolled waterfalls of shaped wood soften the edges. Petal's appeal is accentuated by the visual grain of the wood, which resembles the fine detail on a flower – the lines emanating outwards in the direction of a bloom.

### CB-29M Petal Armless Chair Metal Base

W 19 3/4", 50.2 cm  
D 21 5/8", 55 cm  
H 30 3/8", 77.2 cm  
SH 18 1/4", 46.3 cm

### CB-290M Petal Armchair Metal Base

W 23 7/8", 60.7 cm  
D 21 5/8", 55 cm  
H 30 3/8", 77.2 cm  
SH 18 1/4", 46.3 cm  
AH 24 7/8", 63.2 cm

*Shell:*  
3D Oak Veneer  
3D Walnut Veneer

*Finish:*  
Ebonized black lacquer  
on Oak. Raw effect lacquer  
on Oak. Natural lacquer on  
Oak or Walnut.

*Base:*  
Tubular steel 4-leg base  
(19mm) with smoke powder  
coat finish.

Made in Italy

# Petal

## Petal Chair

2018

Chairs



The BassamFellows Petal Chair is the most advanced 3D molded wood veneer chair ever put into commercial production. It takes some of its inspiration from Saarinen's Tulip chair, and also offers a dialogue with the history of the Charles and Ray Eames experiments. The super-shaped wood mimics the unfolding of flower petals, creating a comfortable ergonomic form. The back is wider at its top to provide support, while rolled waterfalls of shaped wood soften the edges. Petal's appeal is accentuated by the visual grain of the wood, which resembles the fine detail on a flower – the lines emanating outwards in the direction of a bloom.

### CB-29 Petal Armless Chair

W 19 3/4", 50.2 cm  
D 21 5/8", 55 cm  
H 30 3/8", 77.2 cm  
SH 18 1/4", 46.3 cm

### CB-290 Petal Armchair

W 23 7/8", 60.7 cm  
D 21 5/8", 55 cm  
H 30 3/8", 77.2 cm  
SH 18 1/4", 46.3 cm  
AH 24 7/8", 63.2 cm

*Shell:*  
3D Oak Veneer  
3D Walnut Veneer

*Finish:*  
Ebonized black lacquer  
on Oak. Raw effect lacquer  
on Oak. Natural lacquer on  
Oak or Walnut.

*Base:*  
Solid Oak or Solid Walnut.  
Base matches shell wood  
type and finish.

Made in Italy

**Petal**  
Petal Chair

2018

Chairs



The BassamFellows Petal Chair is the most advanced 3D molded wood veneer chair ever put into commercial production. It takes some of its inspiration from Saarinen's Tulip chair, and also offers a dialogue with the history of the Charles and Ray Eames experiments. The super-shaped wood mimics the unfolding of flower petals, creating a comfortable ergonomic form. The back is wider at its top to provide support, while rolled waterfalls of shaped wood soften the edges. Petal's appeal is accentuated by the visual grain of the wood, which resembles the fine detail on a flower – the lines emanating outwards in the direction of a bloom.

**CB-29SL Petal Armless Chair  
Sled Base**

W 21 3/4", 55.3 cm  
D 21 5/8", 55 cm  
H 30 3/8", 77.2 cm  
SH 18 1/4", 46.3 cm

*Shell:*  
3D Oak Veneer  
3D Walnut Veneer

*Finish:*  
Ebonized black lacquer  
on Oak. Raw effect lacquer  
on Oak. Natural lacquer on  
Oak or Walnut.

*Base:*  
Stacking sled base in  
solid steel rod (12mm) with  
smoke powder coat finish.

Chair stacks to 12 high with  
companion trolley.

Made in Italy

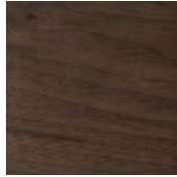
# Wood

BassamFellows  
Wood

Wood



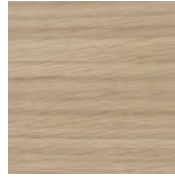
Walnut  
W-NA



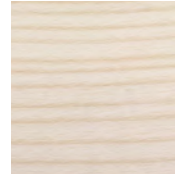
Walnut Black Oil  
W-BO



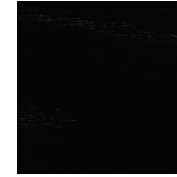
Oak  
O-NA



Oak Raw Effect  
O-RE



White Ash  
A-BL



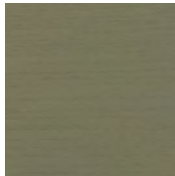
Ebonized Ash  
A-EB



Teak  
T-NA



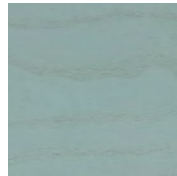
Iroko  
I-NA



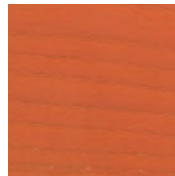
Sage Green Ash  
A-SG



Sun Yellow Ash  
A-SY



Horizon Blue Ash  
A-HB



Mesa Red Ash  
A-MR