

Circular Circular Stools

2016

Stools



Craig Bassam designed the Circular Stool to be a “quiet,” functional object that could be used in many different interior environments without competing for attention. The elemental simplicity marries pure geometry with high craft. A sturdy but agile floating presence is created by the stool’s base, made from circular sections of nanoceramic coated steel tubing. The legs are bent to the tightest possible radius for elegance and sophistication. Circular stanchions elevate the upholstered seat from the base creating the appearance of exceptional lightness.

CB-260 Circular Stool (3 leg)

W 17 3/4", 45 cm
D 17 3/4", 45 cm
H 18 1/8", 46 cm

CB-262 Circular Counter Stool (4 leg)

W 15 3/4", 40 cm
D 15 3/4", 40 cm
H 25 3/4", 65.4 cm

CB-263 Circular Bar Stool (4 leg)

W 15 3/4", 40 cm
D 15 3/4", 40 cm
H 31 5/8", 80.4 cm

Base:
Tubular steel with black powder coat finish, or satin nickel, satin brass, bronze, gunmetal, or custom metal nanoceramic coated tubular steel.

Upholstery:
Foam upholstery with double topstitch.

Made in Italy

Metal

BassamFellows
Metal

Metal



Matte Black
BP



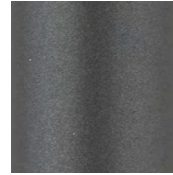
Satin Nickel
SN



Satin Brass
SB



Bronze
BZ



Gunmetal
GM

Nanoceramic coated steel is a more durable and environmentally improved alternative to traditional metal plating where nano particles of metal are mixed with resin and sprayed onto the metal surface versus being placed in a chemical bath.

Additional colors available. Minimum and upcharge may apply.

Matte Black

Powder coated steel

Satin Nickel

Nanoceramic coated steel

Satin Brass

Nanoceramic coated steel

Bronze

Nanoceramic coated steel

Gunmetal

Nanoceramic coated steel

Elegant

BassamFellows
Leather

Leather



95947 Oxblood



11038 Platinum
Gray



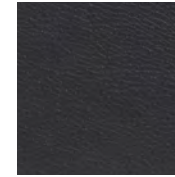
43024 Camel



43807 British Tan



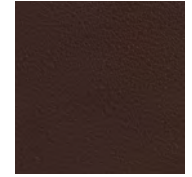
48027 Olive



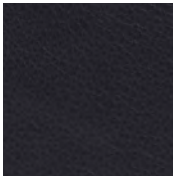
91059 Anthracite



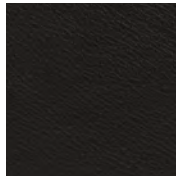
93718 Dark Cognac



93957 Dark Brown



97026 Dark Navy



99001 Black

Elegant grain leather is aniline-dyed with a batique-effect that displays the natural character of the original Scandinavian cattle hide.

Additional colors available. Minimum and upcharge may apply.

Raw Material

Grain leather from
Scandinavian cattle

Thickness

1.0 – 1.2mm

Finish

Pure aniline leather

Lightfastness

3

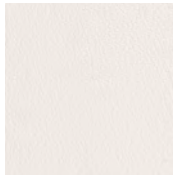
Price Grade

A

Coach

Leather

BassamFellows
Leather



00118 Milk



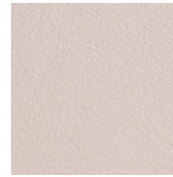
11073 Pale Gray



11049 Medium Gray



13048 Elephant



01061 Gray Beige



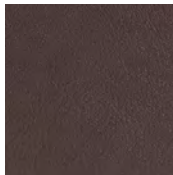
13072 Taupe



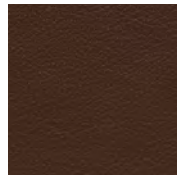
02119 Camel



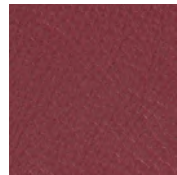
33004 British Tan



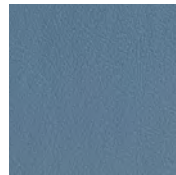
93129 Dark
Chocolate



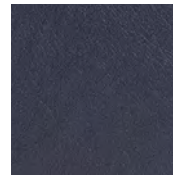
93109 Topaz Brown



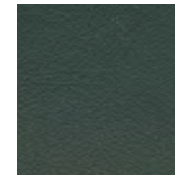
35126 Oxblood



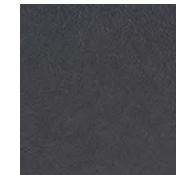
17027 Cadet Blue



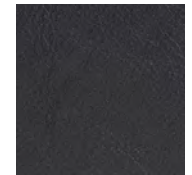
77127 Dark Navy



98015 Dark Green



91102 Anthracite



99999 Black

Coach is a chrome free, soft and pliable semi-aniline leather that offers outstanding comfort combined with excellent durability and is suitable for public environments.

Additional colors available. Minimum and upcharge may apply.

Raw Material

Grain leather from Scandinavian cattle

Thickness

1.1 - 1.3mm

Finish

Semi-Aniline leather

Lightfastness

6

Price Grade

A

Comfort

Leather

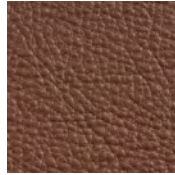
BassamFellows
Leather



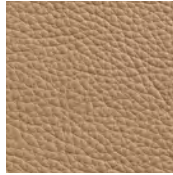
02067 Beige



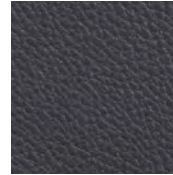
12114 Gray Beige



33286 Chestnut
Brown



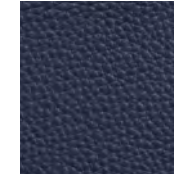
43632 Camel



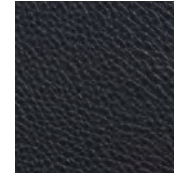
91089 Anthracite



93287 Chocolate



97054 Navy



99991 Black

Like the name suggests, Comfort is a soft aniline leather that showcases a varied grain and the distinct features of the natural hide.

Additional colors available. Minimum and upcharge may apply.

Raw Material

Grain leather from Scandinavian cattle

Thickness

1.3 - 1.5mm

Finish

Pure aniline leather

Lightfastness

3

Price Grade

B