

Leather Desks

2004

Tables



The writing desk is a classic furniture staple that marries beauty with functionality. Through proportion and engineering, BassamFellows has reimagined this time-honored piece, producing a sensuous status symbol for the ultimate sophisticate. Created in tandem with the BassamFellows Daybed, the Leather Desk is the ultimate expression of functional luxury. Structurally, the desk has a striking, slim silhouette, with each leg and corner joint dowelled eight times to provide strength despite the thin proportion. This creates a sense of levity, when contrasted against the desk's solid wood construction. Legs, side members, and structural spans are reduced to their essence and carefully considered in relationship to each other. The absolute purity of form masks the true genius of the desk's function. Three slim drawers, nearly imperceptible to the eye, are cut away from the structure allowing the user to keep the desktop clear when not in use.

CB-311 Leather Desk

W 71 5/8", 182 cm
D 33 1/2", 85 cm
H 28 3/8", 72 cm

CB-311M-W Leather Desk Medium

W 63", 160 cm
D 29 1/2", 75 cm
H 28 3/8", 72 cm

CB-311P Leather Desk Petit

W 47 1/4", 120 cm
D 29 1/2", 75 cm
H 28 3/8", 72 cm

CB-311-90 Leather Games Table

W 35 3/8", 90 cm
D 35 3/8", 90 cm
H 28 3/8", 72 cm

Wood:
Solid Ash
Solid Oak
Solid Walnut

Finish:
Ebonized black lacquer
on Ash or bleached, white
pigment, matte acrylic on
Ash. Raw effect lacquer on
Oak. Hand rubbed natural
oil on Oak or Walnut,
or hand rubbed black oil
on Walnut.

Carved, solid wood. Leather
inset top and drawer linings.

Made in Italy

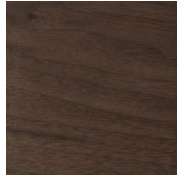
Wood

BassamFellows
Wood

Wood



Walnut
W-NA



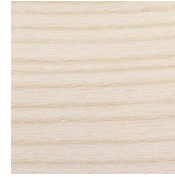
Walnut Black Oil
W-BO



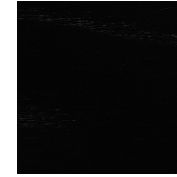
Oak
O-NA



Oak Raw Effect
O-RE



White Ash
A-BL



Ebonized Ash
A-EB



Teak
T-NA



Iroko
I-NA



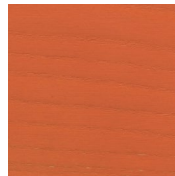
Sage Green Ash
A-SG



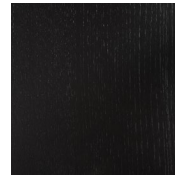
Sun Yellow Ash
A-SY



Horizon Blue Ash
A-HB



Mesa Red Ash
A-MR



Ebonized Oak
O-EB

Surface II

Leather

Penelopeoggi
Leather



101 Black



141 Anthracite



126 English Green



154 Sapphire



140 Chocolate



274 British Tan



228 Burgundy

For use on the Leather Desk and Tables, Surface II is a durable leather with a smooth and soft grain.

Raw Material

Leather from European cattle

Thickness

1 - 1.2mm

Finish

Mineral tanned, dyed through

Lightfastness

4

Price Grade

B