

# Petal

## Petal Lounge Chair

2018

Lounge Chairs



The BassamFellows Petal Chair is the most advanced 3D molded wood veneer chair ever put into commercial production. It takes some of its inspiration from Saarinen's Tulip chair, and also offers a dialogue with the history of the Charles and Ray Eames experiments. The super-shaped wood mimics the unfolding of flower petals, creating a comfortable ergonomic form. The back is wider at its top to provide support, while rolled waterfalls of shaped wood soften the edges. Petal's appeal is accentuated by the visual grain of the wood, which resembles the fine detail on a flower – the lines emanating outwards in the direction of a bloom.

### CB-294M Petal Armless Lounge Chair Metal Base

W 22 1/2", 57.1 cm  
D 25 1/2", 64.8 cm  
H 26 5/8", 67.5 cm  
SH 16 3/4", 42.5 cm

### CB-295M Petal Lounge Armchair Metal Base

W 27 1/8", 68.9 cm  
D 25 1/2", 64.8 cm  
H 26 5/8", 67.5 cm  
SH 16 3/4", 42.5 cm  
AH 21 7/8", 55.5 cm

*Shell:*  
3D Oak Veneer  
3D Walnut Veneer

*Finish:*  
Ebonized black lacquer  
on Oak. Raw effect lacquer  
on Oak. Natural lacquer on  
Oak or Walnut.

*Base:*  
Tubular steel 4-leg base  
(19mm) with smoke powder  
coat finish.

*Upholstery:*  
Optional, removable seat  
pad with dense foam and  
welt detail.

Made in Italy

**Petal**  
Petal Lounge Chair

2018

Lounge Chairs



The BassamFellows Petal Chair is the most advanced 3D molded wood veneer chair ever put into commercial production. It takes some of its inspiration from Saarinen's Tulip chair, and also offers a dialogue with the history of the Charles and Ray Eames experiments. The super-shaped wood mimics the unfolding of flower petals, creating a comfortable ergonomic form. The back is wider at its top to provide support, while rolled waterfalls of shaped wood soften the edges. Petal's appeal is accentuated by the visual grain of the wood, which resembles the fine detail on a flower – the lines emanating outwards in the direction of a bloom.

**CB-294 Petal Armless Lounge Chair**

W 22 1/2", 57.1 cm  
D 25 1/2", 64.8 cm  
H 26 5/8", 67.5 cm  
SH 16 3/4", 42.5 cm

**CB-295 Petal Lounge Armchair**

W 27 1/8", 68.9 cm  
D 25 1/2", 64.8 cm  
H 26 5/8", 67.5 cm  
SH 16 3/4", 42.5 cm  
AH 21 7/8", 55.5 cm

*Shell:*  
3D Oak Veneer  
3D Walnut Veneer

*Finish:*  
Ebonized black lacquer on Oak. Raw effect lacquer on Oak. Natural lacquer on Oak or Walnut.

*Base:*  
Solid Oak or Solid Walnut. Base matches shell wood type and finish.

*Upholstery:*  
Optional, removable seat pad with dense foam and welt detail.

Made in Italy

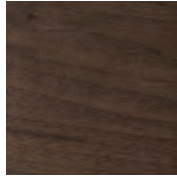
# Wood

BassamFellows  
Wood

Wood



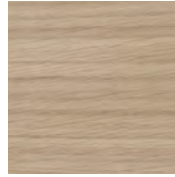
Walnut  
W-NA



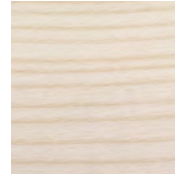
Walnut Black Oil  
W-BO



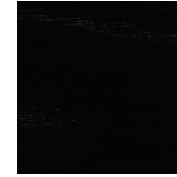
Oak  
O-NA



Oak Raw Effect  
O-RE



White Ash  
A-BL



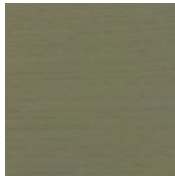
Ebonized Ash  
A-EB



Teak  
T-NA



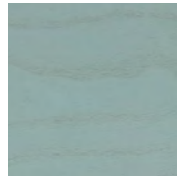
Iroko  
I-NA



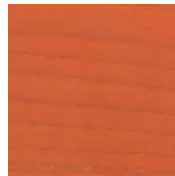
Sage Green Ash  
A-SG



Sun Yellow Ash  
A-SY



Horizon Blue Ash  
A-HB



Mesa Red Ash  
A-MR

# Elegant

BassamFellows  
Leather

Leather



95947 Oxblood



11038 Platinum  
Gray



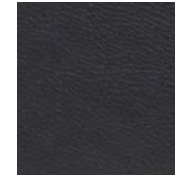
43024 Camel



43807 British Tan



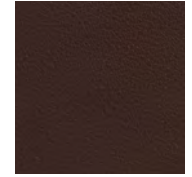
48027 Olive



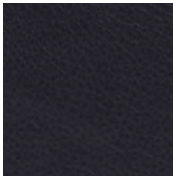
91059 Anthracite



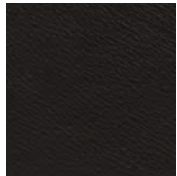
93718 Dark Cognac



93957 Dark Brown



97026 Dark Navy



99001 Black

Elegant grain leather is aniline-dyed with a batique-effect that displays the natural character of the original Scandinavian cattle hide.

Additional colors available. Minimum and upcharge may apply.

## Raw Material

Grain leather from  
Scandinavian cattle

## Thickness

1.0 – 1.2mm

## Finish

Pure aniline leather

## Lightfastness

3

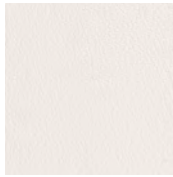
## Price Grade

A

# Coach

Leather

BassamFellows  
Leather



00118 Milk



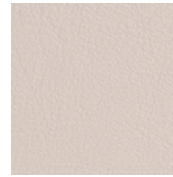
11073 Pale Gray



11049 Medium Gray



13048 Elephant



01061 Gray Beige



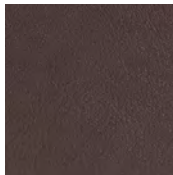
13072 Taupe



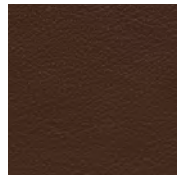
02119 Camel



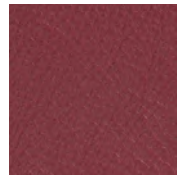
33004 British Tan



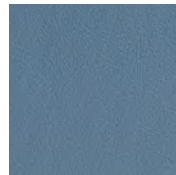
93129 Dark  
Chocolate



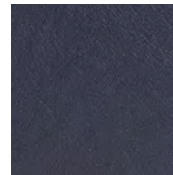
93109 Topaz Brown



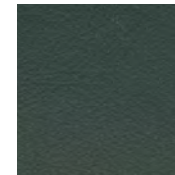
35126 Oxblood



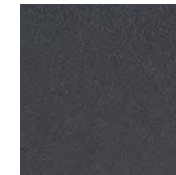
17027 Cadet Blue



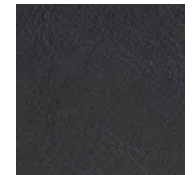
77127 Dark Navy



98015 Dark Green



91102 Anthracite



99999 Black

Coach is a chrome free, soft and pliable semi-aniline leather that offers outstanding comfort combined with excellent durability and is suitable for public environments.

Additional colors available. Minimum and upcharge may apply.

#### Raw Material

Grain leather from Scandinavian cattle

#### Thickness

1.1 - 1.3mm

#### Finish

Semi-Aniline leather

#### Lightfastness

6

#### Price Grade

A

## Comfort

BassamFellows  
Leather

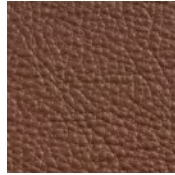
Leather



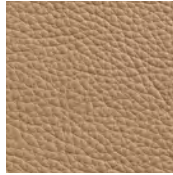
02067 Beige



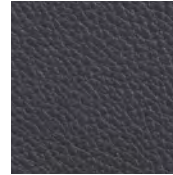
12114 Gray Beige



33286 Chestnut  
Brown



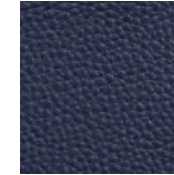
43632 Camel



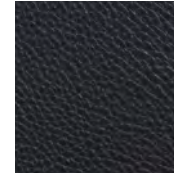
91089 Anthracite



93287 Chocolate



97054 Navy



99991 Black

Like the name suggests, Comfort is a soft aniline leather that showcases a varied grain and the distinct features of the natural hide.

Additional colors available. Minimum and upcharge may apply.

### Raw Material

Grain leather from  
Scandinavian cattle

### Thickness

1.3 - 1.5mm

### Finish

Pure aniline leather

### Lightfastness

3

### Price Grade

B