

Plank

Plank Console Tables

2004

Occasional Tables



BassamFellows introduced the Plank Table Collection as a response to a design challenge: how to make an incredibly lightweight table that would appear to almost defy gravity? Like some of the best modern architecture, the Plank Table challenges typical notions of structure, often inviting puzzled looks from those who wonder how it is able to hover so effortlessly. The table's innovative design formula uses a triangular structure that is independent of the rectangular geometry of the top, the Plank Table's legs are thus minimized and the structural span is maximized. The result is a three-legged table with triangular cantilevers at each end, creating the illusion of a floating surface. Larger tables link two triangular structures back-to-back to form a zigzag pattern with four legs, achieving spans of up to 9 feet – the lightest possible visual to contrast the mass of the beautifully crafted solid wood plank top (some tables available with glass tops).

CB-337-140 Plank Console Table Short

W 55 1/8", 140 cm
D 17 3/4", 45 cm
H 27 5/8", 70 cm
T 3/4", 2 cm

CB-337-180 Plank Console Table

W 70 7/8", 180 cm
D 17 3/4", 45 cm
H 27 5/8", 70 cm
T 3/4", 2 cm

CB-338-210 Plank Console Table

W 82 5/8", 210 cm
D 17 3/4", 45 cm
H 27 5/8", 70 cm
T 3/4", 2 cm

CB-339-240 Plank Console Table

W 94 1/2", 240 cm
D 17 3/4", 45 cm
H 27 5/8", 70 cm
T 3/4", 2 cm

CB-339-274 Plank Console Table

W 107 7/8", 274 cm
D 17 3/4", 45 cm
H 27 5/8", 70 cm
T 3/4", 2 cm

Wood:
Solid Ash
Solid Oak
Solid Walnut

Finish:
Ebonized black lacquer on Ash or bleached, white pigment, matte acrylic on Ash. Raw effect lacquer on Oak. Hand rubbed penetrating polyurethane on Oak or Walnut, or hand rubbed black oil on Walnut.

Top:
Solid wood.

Base:
Oxidized brass or stainless steel cold rolled true bar three-leg triangular frame.

Made in USA

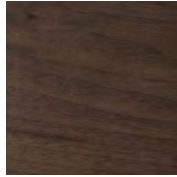
Wood

BassamFellows
Wood

Wood



Walnut
W-NA



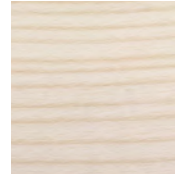
Walnut Black Oil
W-BO



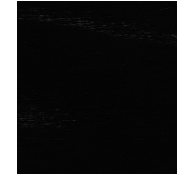
Oak
O-NA



Oak Raw Effect
O-RE



White Ash
A-BL



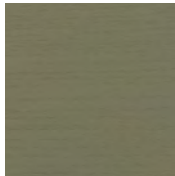
Ebonized Ash
A-EB



Teak
T-NA



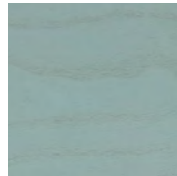
Iroko
I-NA



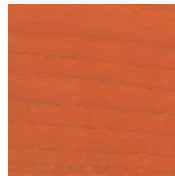
Sage Green Ash
A-SG



Sun Yellow Ash
A-SY



Horizon Blue Ash
A-HB



Mesa Red Ash
A-MR

Metal

BassamFellows
Metal

Metal



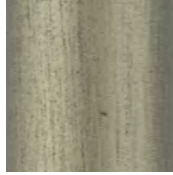
Matte Black
BP



Satin Nickel
SN



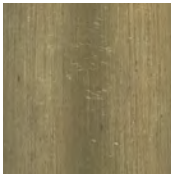
Satin Brass
SB



Bronze
BZ



Gunmetal
GM



Oxidized Brass
BR



Stainless Steel
SS

Nanoceramic coated steel is a more durable and environmentally improved alternative to traditional metal plating where nano particles of metal are mixed with resin and sprayed onto the metal surface versus being placed in a chemical bath.

Additional colors available. Minimum and upcharge may apply.

Matte Black

Powder coated steel

Satin Nickel

Nanoceramic coated steel

Satin Brass

Nanoceramic coated steel

Bronze

Nanoceramic coated steel

Gunmetal

Nanoceramic coated steel

Oxidized Brass

Hand brushed solid brass

Stainless Steel

Hand brushed stainless steel