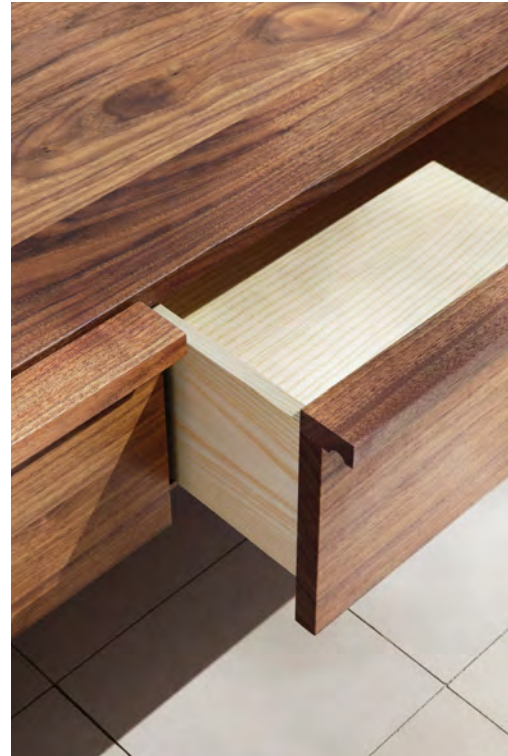


## Wall Drawers

Storage and Accessories

2008



Drawing inspiration from minimalist artist Donald Judd, who repeatedly explored the pure geometry of multiplying boxes in his work, the design of the Wall Drawer attempts to transform a simple wooden box into something sublime. Like the artist's work, each wall drawer emanates a rigorous, sculptural power. Drawer fronts are constructed entirely of solid wood planks while the drawer box is fully finished on all sides in wood veneer, lending a sense of pure symmetry. Minimal details such as a carved, integral drawer pull and soft-close interior hardware add luxury while maximizing functionality. The Wall Drawer Collection is incredibly flexible. They can be added to a bedroom or living room to deconstruct the traditional bureau. They also double as lightweight floating bedside tables. In the dining room, media room, or conference room, the drawers can be hung horizontally to create long lengths of storage – a lighter alternative to a traditional credenza.

### **CB-32 Wall Drawer Single/ CB-32D Wall Drawer Single Drop Front**

W 22", 56 cm  
D 19", 48.2 cm  
H 8 1/4", 21 cm

### **CB-32L Wall Drawer Double/ CB-32DL Wall Drawer Double Drop Front**

W 44 1/8", 112 cm  
D 19", 48.2 cm  
H 8 1/4", 21 cm

### **CB-32S Wall Drawer Single Slim**

W 22", 56 cm  
D 19", 48.2 cm  
H 4 1/2", 11.4 cm

### **CB-32SL Wall Drawer Double Slim**

W 44 1/8", 112 cm  
D 19", 48.2 cm  
H 4 1/2", 11.4 cm

*Wood:*  
Ash  
Oak  
Walnut

*Finish:*  
Ebonized black lacquer on Ash bleached, white pigment, matte acrylic on Ash, Mesa Red aniline dye on Ash, Horizon Blue aniline dye on Ash, Sun Yellow aniline dye on Ash, Sage Green aniline dye on Ash, or custom color aniline dye on Ash. Raw effect lacquer on Oak.

Hand rubbed natural oil on Oak or Walnut, or hand rubbed black oil on Walnut.

Solid wood drawer fronts with veneered wood box.

Made in Italy

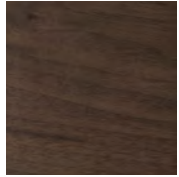
# Wood

BassamFellows  
Wood

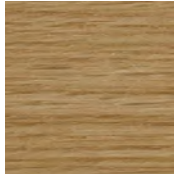
Wood



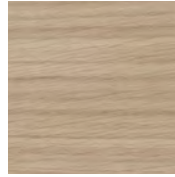
Walnut  
W-NA



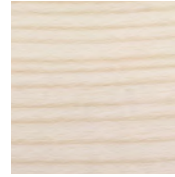
Walnut Black Oil  
W-BO



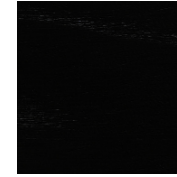
Oak  
O-NA



Oak Raw Effect  
O-RE



White Ash  
A-BL



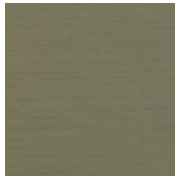
Ebonized Ash  
A-EB



Teak  
T-NA



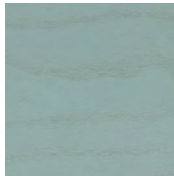
Iroko  
I-NA



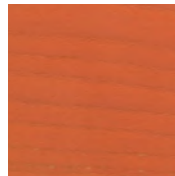
Sage Green Ash  
A-SG



Sun Yellow Ash  
A-SY



Horizon Blue Ash  
A-HB



Mesa Red Ash  
A-MR